



Double Tee's
Used In
Multi-Family
Projects



About us:

- Located in Hawley, MN
- Family owned
- Dedicated to quality and safety
- Committed to fully understanding each project goal
- We provide creative solutions to enhance the design and function

Double Tee's

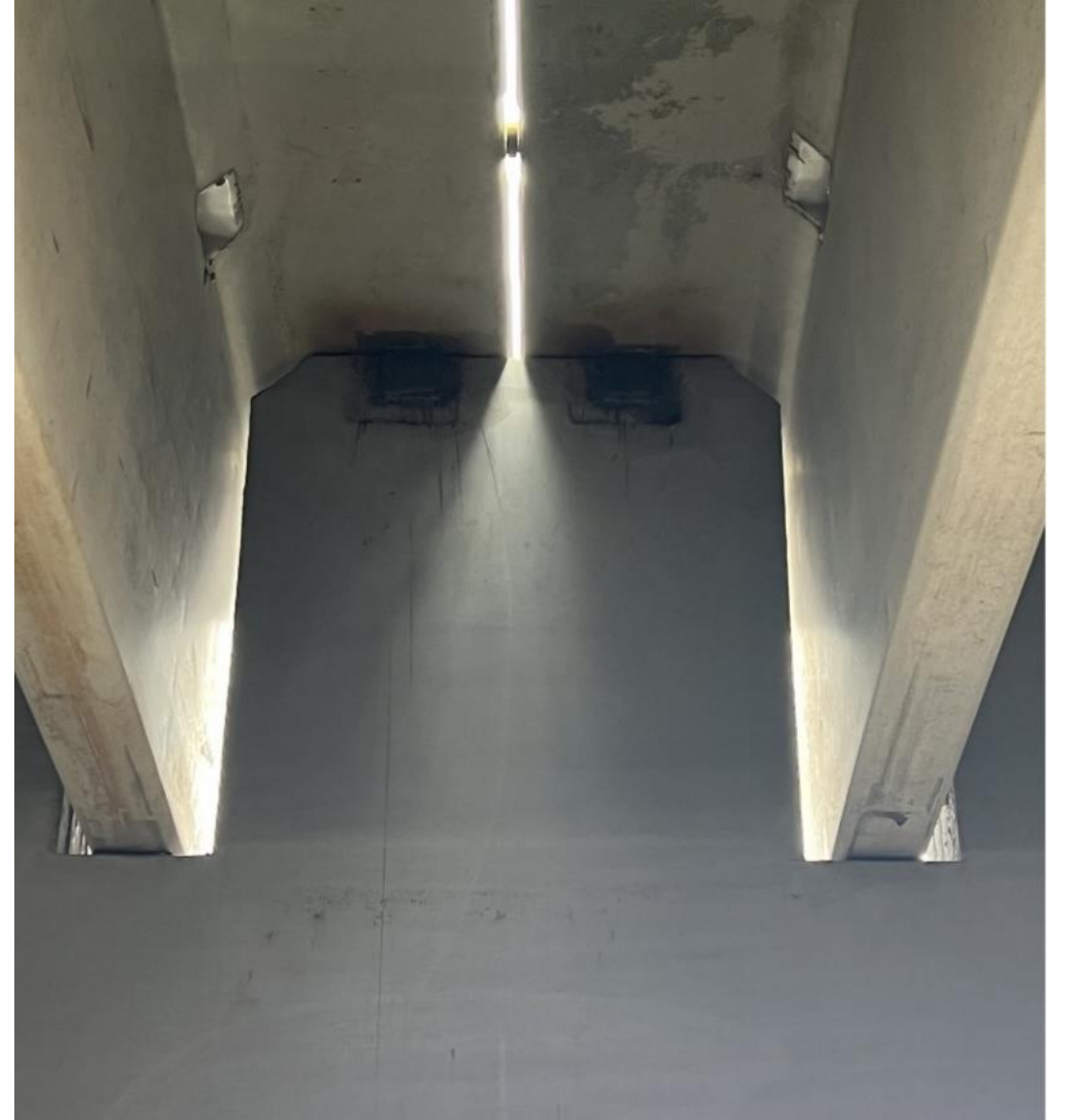
- The most widely used structural precast concrete building products in North America
- Combine strength and durability
- Creates superior load bearing capacities
- Cost-effective solution

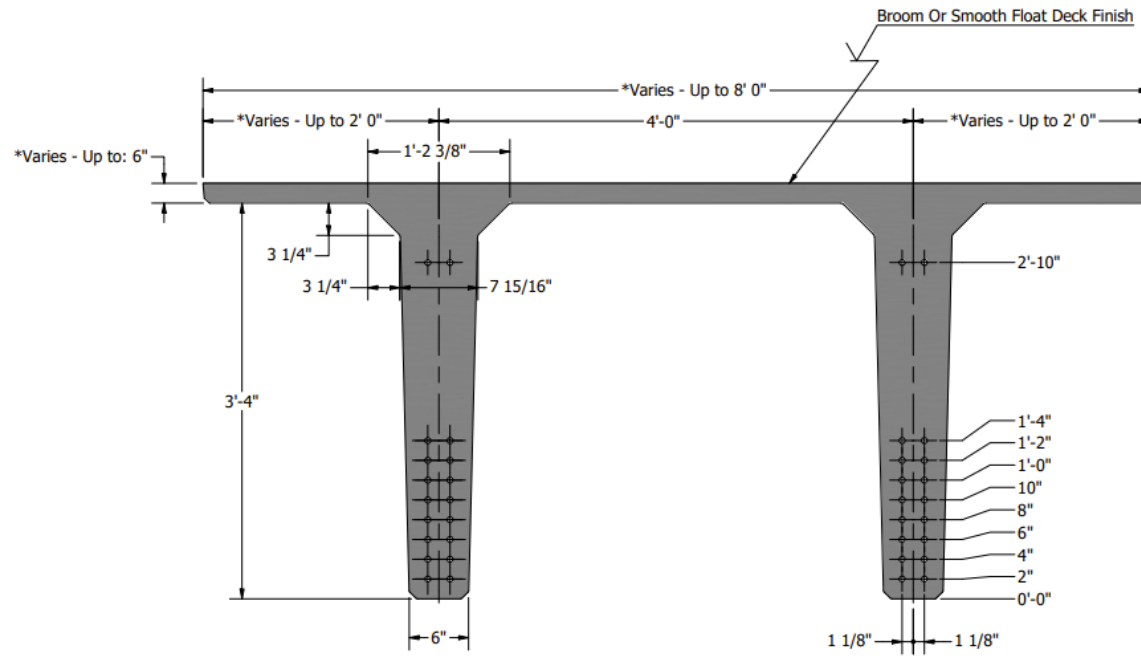


Double Tee Advantages In Multi-Family Buildings

- Limited columns in the parking area
- The DT's on lower levels will be typical 30"-12' wide DT that is pretopped reducing the amount of site cast concrete
- Precast installation time is reduced as well as the number of loads that must be shipped to the site
- The same price or less than the traditional hollow core system







- Targeted Max Double Tee span is 60' to 64'
- 2 stories of wood framed above = 36" DT, including a 4" flange, plus a 4" composite topping slab for a 40" deep floor section
- 3 stories of wood framed above = 40" DT, including a 4" flange, plus a 4" composite topping slab for a 44" deep floor section
- 4 to 5 stories of wood framed above = 44" DT, including a 4" flange, plus a 4" composite topping slab for a 48" deep floor section



Specs





Design Stipulation

- Foundation walls that bear the Double Tee's need to be CIP or Precast as block walls will not typically handle the loads



Questions?





TARACON
precast

Thank you!

TARACONPRECAST.COM